

## English

In our writing lessons, we will be writing our own enlightenment themed stories after practising skills closely following a lighthouse keeper's enlightenment story. We will also be writing senses themed poems as well as an explanation text. This half term, our class novel is 'Letters from the Lighthouse' by Emma Carroll. We will be exploring the text in detail and using it to answer different styles of comprehension questions.

## Forensic Reading

We will focus our reading around the topic of 'Journeys and futures' focusing on extracts of text from the novel 'The Journey'.

## Maths

Children will have the opportunity this half term to develop their understanding of:

- Multiplying and dividing by 10/100/1000
- Adding and subtracting fractions
- Multiplying and dividing fractions
- Converting metric measures and converting from miles to kilometres
- Recognising imperial and metric measures

## Music

**Music Express Unit- Journeys:** Our topic will explore song lyrics and focus on the 'journey' throughout a song to capture the path a character may take as each verse and the chorus is sang.

## Geography

This half term, for our first geography topic of Year 6, we will be investigating the location of different lighthouses along the British coast, using OS maps to find 4- and 6-figure grid references. We will then progress to learning about Whitby and comparing its human and physical features to Leeds.

## Spellings

Year 6 are focusing heavily on improving their spellings and in the next half term they will be mainly learning:

- -cial and -tial suffixes
- Apostrophes for possession and contraction
- Prefixes and suffixes for root words

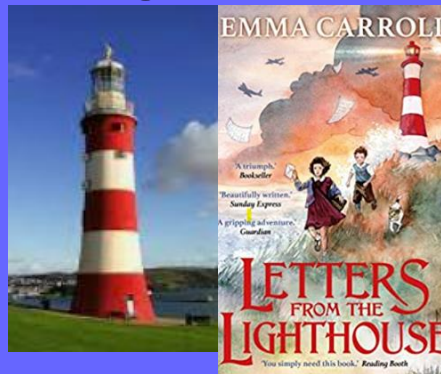
## Computing

Children will plan a program which includes a timer and a score. They will follow their plans to create their program. They will debug their game when things do not run as expected to create a game that has multiple functions or 'levels'.

## RE

Pupils will further develop their knowledge and understanding of Sikhism, including worship practices. They will reflect on areas of faith in action in Sikhism. Pupils will understand and evaluate concepts such as values, symbols, commitment and service within Sikhism.

## Lighthouses



## PSHE

This half term, the children continue their 'keeping healthy as we grow' topic. They will learn about making choices that support a healthy, balanced lifestyle. They will also learn that habits can be healthy or unhealthy, and learn strategies to help change or break unhealthy habits.

## French

### **Notre Monde (The world around us)**

Children will learn the names of continents and countries, learn to ask for directions and say simple sentences relating to common animals or landmarks.

## PE

This half term, our indoor session will be dance and our outdoor session will be tennis. Please continue to ensure that children come to school in appropriate PE kits for the weather.

## Science

**Danger! Low Voltage:** We will associate the brightness of a lamp or the volume of a buzzer with the number and voltage of cells used in the circuit. We will compare and give reasons for variations in how components function, including the brightness of bulbs, the loudness of buzzers and the on/off position of switches. We will draw and label circuit diagrams using the correct symbols.

## DT

### **Mechanisms (Electrical Systems) and Structures:**

Children will be making a working model lighthouse to light up a room. They will use Crumble controllers and software to program when the light switches on and off.